

energy performance consultants  
**mendip energy**

energy assessment that does not cost the earth



## code for sustainable homes assessment...

**an explanation...** The Code for sustainable homes is an environmental assessment rating method for new homes, which assesses environmental performance in a two stage process using objective criteria and verification, the first at design stage and then at post construction. There is generally less awareness of the contribution that good building design can make to reducing pollution and improving the environment. The UK government is committed to addressing both causes and consequences of climate change. Building sustainable homes requires us to minimise all sorts of environmental impacts in addition to carbon dioxide emissions, such as water use, waste generated and materials for building.

The code represents good or best practice. Each credit is technically feasible and can be delivered by the building industry. From 1st May 2008 it is mandatory for a Code Sustainability Certificate or a NIL rated certificate to be included in a Home Information Pack (HIP). This applies to all new homes that are marketed for sale. The code is intended as a single national standard to guide industry in the design and construction of sustainable homes. It is a means of driving continuous improvement, greater innovation and exemplary achievement in sustainable home building.

### what it means

the code for Sustainable Homes (CSH) has 6 ratings or levels. each level shows the amount of improvement in % against Target Emission Rate (TER). For example to achieve CSH 1 in SAP a 10% reduction in TER is required. CSH 3 requires 25% reduction in TER and CSH 5 requires 100% reduction in TER.

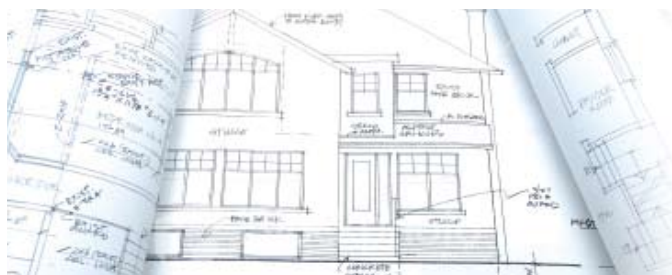
#### assessing the sustainability rating

minimum standards					
energy			water		
Code level	Standard (percentage better than part L1 (06))	Points awarded	Standard (litres per person per day)	Points awarded	Other points required
1(*)	10%	1.2	120	1.5	33.3
2(**)	18%	3.5	120	1.5	43.0
3(***)	25%	5.8	105	4.5	46.7
4(****)	44%	9.4	105	4.5	54.1
5(*****)	100% <sup>2</sup>	16.4	80	7.5	60.1
6(*****)	a zero carbon home <sup>3</sup>	17.6	80	7.5	64.9

Notes:

- 1: Building regulations: Approved Document L (2006) – “Conservation of Fuel and Power”
- 2: Zero emissions in relation to Building regulations issues (i.e. zero emissions from heating, hot water, ventilation and lighting)
- 3: A completely zero carbon home (i.e. zero net emissions of carbon dioxide (CO<sub>2</sub>) from all energy use in the home.)
- 4: All points are rounded to one decimal place.

## mendip energy, the blueprint for energy efficiency



a set of sustainable design principles... the Code measures the sustainability of a home against design categories, rating the ‘whole home’ as a complete package. Those familiar with building regulations, will recognise this as a major and welcome departure from current practice.

The 9 categories:

- energy/CO<sub>2</sub>
- water
- materials
- surface water run-off
- waste
- pollution
- health and well-being
- management
- ecology

Each category includes a number of environmental issues, each issue is a source of impact on the environment.

#### the road map to zero carbon

All new homes to emit 25%

less carbon by 2010

All new homes to emit 44%

less carbon from 2013

All new homes to be zero carbon by 2016

### accreditations

we realise that being able to offer a one stop shop of technical services to our clients, showing them how to unravel the mystery, and offering commercially considered solutions we are a powerful benefit to their business. This is why we work with some of the UK’s best known housebuilders, developers of all sizes and manufacturers of new technologies and systems.

we have the following qualifications and accreditations:

- NHER accredited Plan assessor
- OCDEA able to issue on construction EPC’s
- BINDT registered air tightness testing
- BREEAM accredited/ registered Code assessment

30 cross farm road  
draycott • cheddar  
somerset • BS27 3SE

e: code@mendipenergy.com

t: 01934 742 386

w: www.mendipenergy.com